

# Dance news

WORKING HARD, AIMING HIGH, HAVING FUN!

○ TERM 2 / ○ 2019

## *From Miss Shilleena*

The start of the year has positively flown by with another Term 1 coming to a close. Everyone has been working hard in their classes despite some very hot weather (and blackouts!!). Thank you to everyone for coming to class in the correct shoes and clothing, and for your continued enthusiasm.

Term 1 finishes on Saturday 6<sup>th</sup> April, and resumes on Tuesday 23<sup>rd</sup> April.

All the necessary information about our dance school including timetables, fees and uniform information is found in our prospectus. You can download a copy from our general information page on the website.

<http://www.shilleenasdanceacademy.com.au/news/latest-dance-news-brisbane>

A reminder to please be very respectful around the hall when waiting for classes. The pizza oven is strictly off limits as is the church past the fence. I also remind parents that parking over driveways is illegal. Better to park a short distance away than receive a ticket from the police!!

The known 2019 dates are listed further on in the newsletter, so please note them all down in your dairies.

**DON'T FORGET TO KEEP  
STRETCHING OVER THE HOLIDAYS  
AND PRACTICE AS OFTEN AS YOU  
CAN.**

Yours in Dance,

*Miss Shilleena*



## SFD BALLET, TAP & JAZZ EXAMS

The 2019 SFD ballet, jazz and tap exams will be held between the 20<sup>th</sup> and 25<sup>th</sup> of June. Confirmation of exam times will be provided as soon as possible. All practice music and theory has been sent to you via a Dropbox link and if there are any problems please contact Miss Shilleena.

There will be extra lessons held prior to each exam and these classes are compulsory for all exam students. We will be going over all examination content as well as rehearsing what will happen on the day so that each student can feel as comfortable and prepared as possible.

These extra lessons will be held over three weekends - on the 1<sup>st</sup> & 2<sup>nd</sup> of June, 8<sup>th</sup> & 9<sup>th</sup> of June, and the 15<sup>th</sup> & 16<sup>th</sup> of June. Over these three weekends, students will attend two extra exam practices per examination being undertaken. Permission slips for each of these will go out in the first few weeks of Term 2. As mentioned in the exam letters, there will be a small fee to cover the cost of these additional practices.

# Performance News



## EISTEDDFODS

The SDA Performance Groups are performing at the SFD Combined Schools Concert on Sunday 31 March, and are also working hard towards the upcoming Eisteddfods.

Tickets to the Combined Schools Concert are still available, and can also be purchased at the door on the day (cash only).

This year we will be competing at the Sunshine Coast and Brisbane Eisteddfods.

Intermediate Performance will be competing with "Sky High" and "Summertime Suddness" from last year's concert. They will join with Sub-Senior Performance and Senior Performance to perform "Hot".

Sub-Senior Performance and Senior Performance will perform "Coming Home", "Winter's War" and "Resolutions".

Senior Performance will also compete with "Bond" from 2018.

The dance lists and times will be released soon, so I will keep you all posted once I know.

## 2019 CONCERT NEWS

The planning for this year's concert is underway, and we are very excited to share with you what's happening. The theme for this year's concert is **AROUND THE WORLD**. We travel with SDA across the six continents, and finish with a huge Australian-themed finale.

Costumes have now been chosen and samples ordered for students to try on during Costume Measuring week from the 22<sup>nd</sup> to the 28<sup>th</sup> of June. We cannot stress enough how important it is that all students participating in the concert attend their fittings. If you will be away (it is the last week of school for most students), please contact Miss Shilleena to arrange an alternative time. Costumes need to be ordered by the end of June before pricing changes for most of our suppliers. A detailed timetable for costume fittings will be released in Term 2.

The concert will be held on Saturday 2<sup>nd</sup> November. **Don't forget EVERY STUDENT performs in TWO SHOWS ... an 11:30am matinee and an evening show at 6:30pm.**

All the information regarding this year's concert is included in the Concert Information Sheet/ Permission Slip, which you will receive with this newsletter.

It is **VERY IMPORTANT** that you read all the information and return the Permission Slip by Friday 26<sup>th</sup> April 2019.

**Are you enjoying ballet, and thinking about adding a jazz class?**

**Maybe you're doing tap, and thinking of adding hip hop?**

Term 2 is the time to start a new class, especially if you're thinking of dancing the new style in the concert. Only dancers enrolled in term 2 are eligible to participate in the concert dance for that class.

So don't leave it until it's too late! Contact Miss Shilleena asap to amend your enrolment.

## MOTHER'S DAY DANCE CLASS

Please save the date for this year's Mother's Day Dance Class.

SDA's dancers would like to invite their mums, grandmothers, aunts or other special women in their lives to a Mother's Day Dance Class on Saturday 11<sup>th</sup> May.

Cost will be \$15 per family, and the class will run from 3 to 4pm.

More information will follow in Term 2.



SOUTHERN FEDERATION OF DANCE PRESENTS

# QLD COMBINED SCHOOLS CONCERT

**ADULTS \$27**  
**CONCESSION \$22**  
**STUDENTS \$22**  
**CHILDREN\* \$17**

\* UNDER 14 YEARS

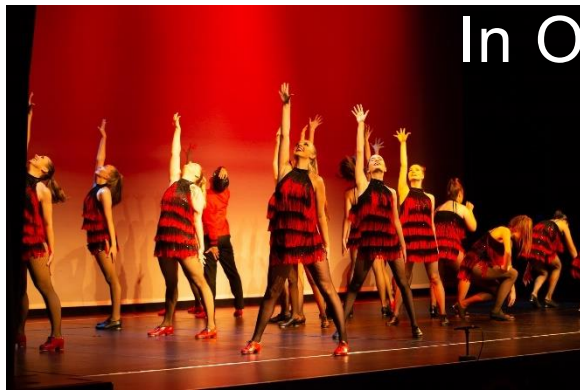
**MARCH 31, 2019**  
**3.45 PM**

ST JOHN'S ANGLICAN COLLEGE PERFORMING ARTS CENTRE  
COLLEGE AVENUE, FOREST LAKE, QLD 4078

**TO BOOK, VISIT [COMPS-ONLINE.COM.AU](http://COMPS-ONLINE.COM.AU)**  
**PRIOR TO 28 MARCH**

TICKETS ALSO AVAILABLE TO PURCHASE AT THE DOOR ON THE DAY. CASH SALES ONLY. ADDITIONAL FEE OF \$3 PER TICKET APPLIES TO THESE PURCHASES.





## In Other News

### TERM 2 ACCOUNTS

Term 2 accounts have been issued. If you do not receive your invoice via email please contact Miss Shilleena ASAP. Unpaid student fees attract an administration fee of 11% to all outstanding balances. Prompt settlement of any overdue accounts will prevent the school from spending unnecessary administration time chasing overdue accounts.

If you pay casually for any of the adult or advanced classes, the cost per class is \$20. Please give the correct money to your teacher at the start of each lesson.

### SECOND HAND SHOES AND CLOTHING

A reminder that we have some second hand shoes and clothing available for sale at the studio. There are ballet, tap, jazz and character shoes, as well as some leotards, skirts, crossover, jackets & shorts.

If you would like to look at any of the items, please ask your teacher before or after class. The boxes are located in the Upstairs Hall.

If you have items to sell, please place them in a ziplock bag with your name, the size of the item, and your asking price clearly marked on the front and give them to your teacher.

### LOST PROPERTY

All items left at the hall are returned to their owners if they are named. If not, they are placed in the box in the kitchen in the upstairs hall. At the end of each term, all unclaimed items are donated to charity.

### PUBLIC HOLIDAYS

Please note we do not hold classes on Public Holidays. The public holidays coming up in Term 2 are:

Easter Monday - Monday 22<sup>nd</sup> April  
Anzac Day - Thursday 25<sup>th</sup> April  
Labour Day - Monday 6<sup>th</sup> May

All Term 2 accounts have been adjusted in accordance with no classes being held on these days.

Performance students will have additional rehearsals on both Anzac and Labour Day. More information will be distributed early in Term 2.

## DANCE DATES 2019



### TERM 1 2019

4/2/19-6/4/19

- March 31 SFD Masterclasses & Combined Schools Concert

- April 1 to 6 Parent Watching Week #1

### TERM 2 2019

23/4/19-29/6/19

- April 22 Easter Monday Public Holiday
- April 25 ANZAC Day & Performance Group Eisteddfod Rehearsals
- May 4 to 5 Sunshine Coast Eisteddfod (Intermediates)
- May 6 Labour Day & Performance Group Eisteddfod Rehearsals
- May 11 Mother's Day Dance Class
- May 11 to 12 Sunshine Coast Eisteddfod (All Groups)
- May 24 to 26 Brisbane Eisteddfod (Intermediates)
- May 31 to June 2 Brisbane Eisteddfod (All Groups)
- June 1 to 2 SFD Exam Workshops #1
- June 8 to 9 SFD Exam Workshops #2
- June 15 to 16 SFD Exam Workshops #3
- June 20 to 25 SFD Exams
- June 22 to 28 Costume Measuring Week

### TERM 3 2019

15/7/19-21/9/19

- July/August Blue Care Performances
- August 14 EKKA Public Holiday
- August 17 SDA Choreography Competition
- August EKKA Performances
- August 31 Father's Day Dance Class
- Sep 9 to 14 Parent Watching Week #2
- Sep 20-23 ADF Sydney Trip (Performance)

### TERM 4 2019

5/10/19-7/12/19

- October 5 Combined Concert Timetable Commences
- October 7 Queen's Birthday - all classes on as per Combined Concert Timetable
- October 20 Theatre Rehearsal at the LEC
- October 21-26 Dress Rehearsal Week
- October 26 to 27 Professional Photos
- November 2 SDA Annual Concert
- November 4 New Timetable Commences
- November 18 to 23 Bring a Friend Week
- December 2 to 7 Crazy Costume Week
- December 7 SDA Breakup Party



We are a Brisbane based company servicing South East Qld. As a Licensed Builder we undertake a wide variety of construction work for residential and commercial clients. We love carpentry and are passionate about what we do. We have a strong background in customer service and work with you to ensure you get exactly what you want.

0423 059 409

[www.divbuild.com.au](http://www.divbuild.com.au)

[info@divbuild.com.au](mailto:info@divbuild.com.au)